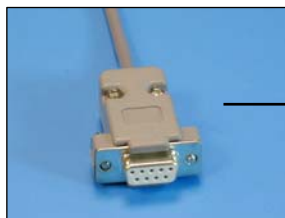


Welch Allyn CardioPerfect Workstation Cycle Interface

You can setup the Cycle with your stress system using the following directions. You will need the RS-232 cable specified below. It establishes communication between the monitor and your stress system. This cable allows your stress system to prompt the monitor when it needs a BP measurement. In addition, it allows the BP measurements taken by the Cycle to be transferred to your stress system display and reports.



RS-232 cable
Part# 91-0013-00



1. Connecting the RS-232 cable:

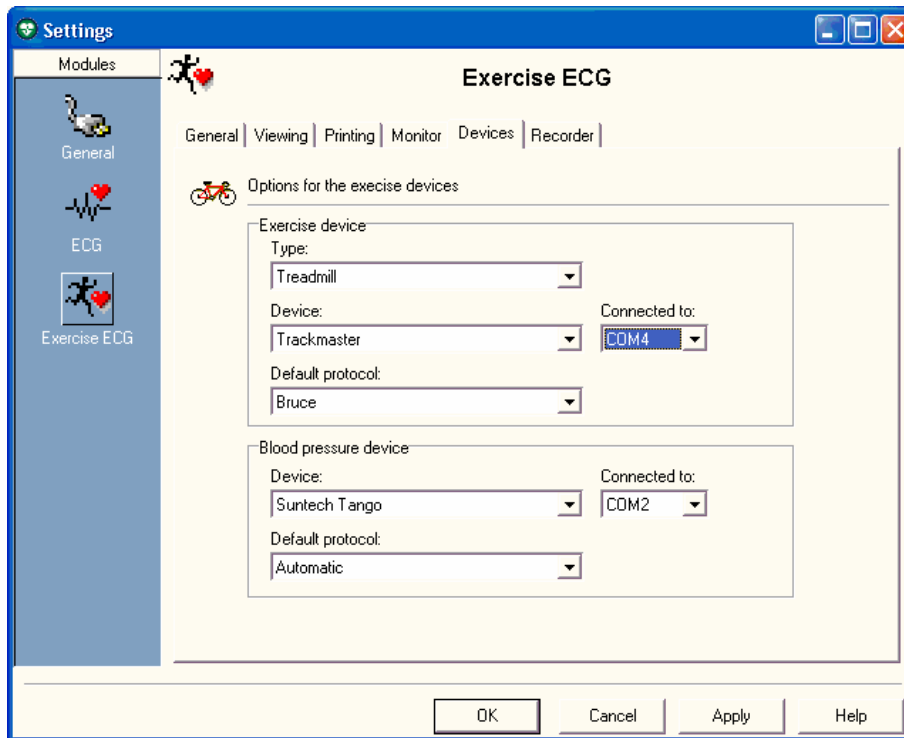
Connect: the RS-232 cable, SunTech part #91-0013-00 (9 pin female to 9 pin female)
From: the RS-232 connection on the connector panel of the Cycle.
To: the COM 2 port on the back of the stress system computer.

2. Setting up the Cycle monitor

- From the measurement view, press and hold the **SELECT** and **ADVANCE** buttons simultaneously for 3 seconds. The System Menu will be displayed.
- Press the **MENU** button once to proceed to the Communication Screen. Press **ADVANCE** until *Cardio Perfect* is displayed.
- Press **MENU** twice to return to the measurement view.

3. Setting up the stress system: (requires an open serial communication port)

- From the ECG software, click **File**, then **Settings**.
 - Select **Exercise ECG**.
 - On the **Devices** tab, set the following parameters:
 - Under **Blood Pressure Device**, **Device** is **SunTech Tango**
 - Connected to** should be set to the desired Com port, typically **COM2**
 - Default protocol** is **None** for measurements started using the Cycle
 - Automatic** for measurements started at the end of stage
- Note: Protocols can be customized; contact Welch Allyn for further details.



- d. Click on the **Recorder** tab, set the following parameters:
Analog output is ECG signal
- e. Click on **OK** and then exit the Workstation Software.
- f. Reopen the workstation for the changes to take affect.
- g. Start a stress test and when you click on the BP button, the Cycle will take a measurement.

TIPS

While in the Stress ECG software module, you may press the F5 key or the BP icon on the display to initiate a BP measurement.

In order to ensure that the Cycle interfaces properly with the CardioPerfect Workstation, start the stress ECG software module immediately after collecting the resting ECG data.